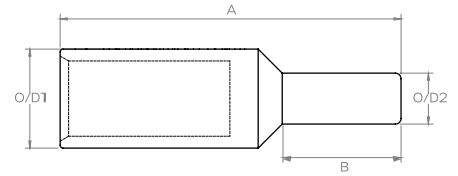
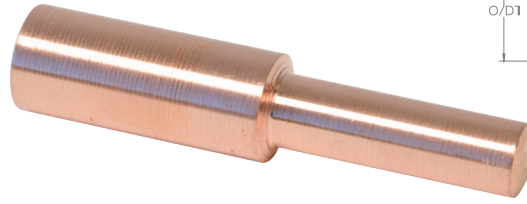




# Copper Stalk Lug



## DESCRIPTION:

For use with specialist switchgear. Manufactured from 99.9% pure high conductivity copper to your specific dimensions. Please be advised most sizes are manufactured to order and are not eligible for return or credit.

| Part No.      | Cable Size         | Dimensions |             |      |             | Crimp Die Info |   |
|---------------|--------------------|------------|-------------|------|-------------|----------------|---|
|               |                    | A          | B           | O/D1 | O/D2        | A/F Hex Die mm | Die Part number                         |
| ECSR16-STALK  | 16mm <sup>2</sup>  | 53         | Custom Size | 9.5  | Custom Size | 7.7            | D25CU (12T Crimp)                       |
| ECSR25-STALK  | 25mm <sup>2</sup>  | 53         | Custom Size | 9.5  | Custom Size | 7.7            | D25CU (12T Crimp)                       |
| ECSR35-STALK  | 35mm <sup>2</sup>  | 53         | Custom Size | 11.5 | Custom Size | 9.2            | D35CU (12T Crimp)                       |
| ECSR50-STALK  | 50mm <sup>2</sup>  | 58         | Custom Size | 12.8 | Custom Size | 10.4           | D50CU (12T Crimp)                       |
| ECSR70-STALK  | 70mm <sup>2</sup>  | 66         | Custom Size | 14.7 | Custom Size | 11.5           | D70CU (12T Crimp)                       |
| ECSR95-STALK  | 95mm <sup>2</sup>  | 75         | Custom Size | 17.4 | Custom Size | 14.2           | D95CU (12T Crimp)                       |
| ECSR120-STALK | 120mm <sup>2</sup> | 84         | Custom Size | 20.0 | Custom Size | 16.5           | D120CU (12T Crimp)                      |
| ECSR150-STALK | 150mm <sup>2</sup> | 88         | Custom Size | 22.5 | Custom Size | 18.3           | D150CU (12T Crimp)                      |
| ECSR185-STALK | 185mm <sup>2</sup> | 93         | Custom Size | 24.2 | Custom Size | 20.0           | D185CU (12T Crimp)                      |
| ECSR240-STALK | 240mm <sup>2</sup> | 98         | Custom Size | 27.8 | Custom Size | 23.1           | D240CU (12T Crimp) / DCL240 (30T Crimp) |
| ECSR300-STALK | 300mm <sup>2</sup> | 102        | Custom Size | 31.3 | Custom Size | 26.0           | D300CU (12T Crimp) / DCL300 (30T Crimp) |
| ECSR400-STALK | 400mm <sup>2</sup> | 106        | Custom Size | 34.8 | Custom Size | 28.1           | D400CU (12T Crimp) / DCL400 (30T Crimp) |
| ECSR500-STALK | 500mm <sup>2</sup> | 110        | Custom Size | 39.0 | Custom Size | 31.0           | DCL500 (30T Crimp)                      |
| ECSR630-STALK | 630mm <sup>2</sup> | 130        | Custom Size | 45.0 | Custom Size | 37.0           | DCL630 (30T Crimp)                      |

Please provide the following details when ordering Copper Stalk Lugs

| ELECTRICAL CONNECTIONS ORDER FORM – COPPER STALK LUGS |  |                  |  |
|---|--|------------------|--|
| Company   |  | Phone            |  |
| Contact   |  | Email            |  |
| Delivery Address                                      |  |                  |  |
| Qty. Required   |  | Order No.        |  |
| Required by   |  |                  |  |
| Conductor Size  |  | mm <sup>2</sup>  |  |
| Dimensions  |  |                  |  |
| Stalk Length B  |  | Stalk Diameter D |  |